

# 10 Cedarwood

First floor offices available

1,039 sq ft To Let



# Your new office

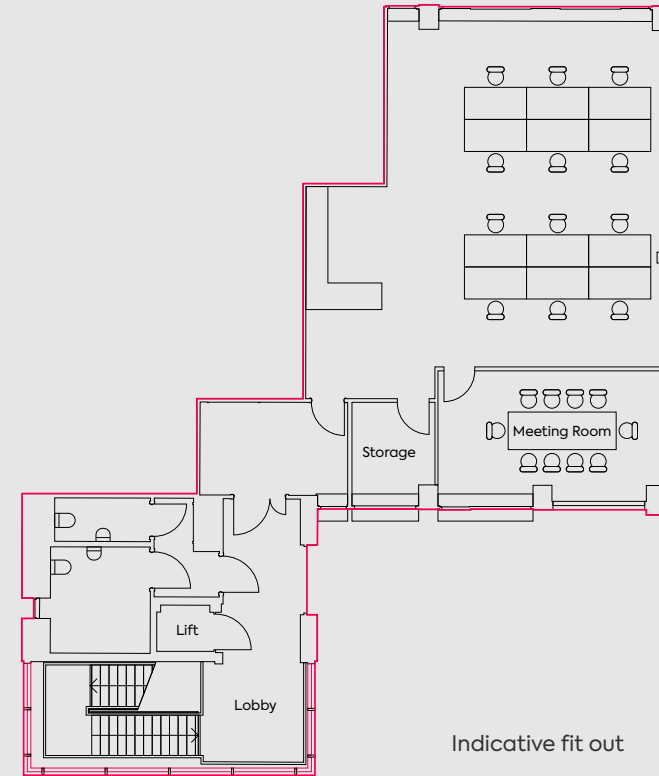
The first floor offices at Cedarwood provides high quality office accommodation with refurbishment underway. It will include a fitted suite with furniture, meeting rooms & kitchen. The office is located on Chineham Park, Basingstoke's premier business park and a vibrant business community. Situated directly opposite the Park's cafe and co-working facility – The Exchange.

- Open plan air conditioning system
- Carpeted throughout
- LED lighting
- Kitchnette & meeting room
- Access control system
- Woodland views
- Opposite The Exchange co-working space & café
- Good parking provision
- Good natural light
- EPC B
- Solar PV

Net Internal Area	SQ FT	SQ M	Parking spaces
-------------------	-------	------	----------------

First floor	1,039	97	5
-------------	-------	----	---

\*Net internal area / \*Plans not to scale. Indicative Only





Trainline connecting Basingstoke to London Waterloo in 1hr

Amenity field with outdoor seating

Easy road connections to A339, A33, M3 & M4

Regular street food, social and fitness events

Gather & Gather cafe with The Exchange co-working space

Jogging/walking route start point

## Your Community

Other amenities nearby include:



10 Cedarwood

Amenity field

Bright Horizon nursery

EV charging points at Spindlewood

Chineham hair & beauty salon

Fitness First gym

Free shuttle bus into Basingstoke town centre and train station every 15 minutes

New cafe arriving 2023

Parklands: walking routes and bio-diversity areas



# Enhanced wellbeing for your people

Chineham Park is part of the largest area certified for health and wellbeing excellence globally, through the Fitwel rating scheme. Fitwel is the most widely used people-focused certification for health and wellbeing excellence in the built environment, and is recognised worldwide for its assessment of holistic health measures.

Chineham Park offers an attractive environment thanks to its diverse mix of on-site amenities and facilities, coupled with open, green spaces, excellent pedestrian connectivity, fitness areas and healthy food options, to help your employees achieve a better work/life balance.



Onsite fitness classes



Community events



Chineham Park running club



Fitness First



Bright Horizons nursery



Beautician and hairdressers



Pizzeria



24hr on-site security



Courtesy buses and taxis



Excellent landscaping across 95 acres, including 900 mature trees



The Exchange & co-working space



Gather & Gather café



Street food events



Free Ryde bike hire

# The Exchange

The Exchange is a concept from Frasers Property that provides an agile and welcoming workspace for dynamic companies and their people who want to connect in an inspiring, technology rich environment.

The Exchange is operated by Gather + Gather, offering breakfast, lunch and all day food and drink options including hot paninis, soups, sandwiches, breakfast baps, sweet and savoury snacks and great coffee.



Agile working  
space



Meeting  
rooms



Flexible  
working



Artisan  
coffee





# Sustainability at Chineham Park

Chineham Park is proud to be targeting net zero carbon by 2050 for managed areas, aligned with certification scheme Science Based Targets, to limit warming to 1.5°C. The park will achieve this through energy efficiency measures, procurement of 100% renewable electricity, and rooftop solar PV installations. Enhancing biodiversity across the park, minimising waste to landfill, and promoting cycling and active travel are more ways Chineham Park is helping our occupiers be more sustainable.

Chineham Park aims to generate social value in the local community. The park fundraises for local charity, Sebastian's Action Trust, and supports an apprenticeship employment programme.



100% renewable energy in common areas



Wildlife Trust Biodiversity Award



Rooftop solar PV roll out



EV charging points



Bird boxes & insect hotels



Bicycle lanes



Air quality monitoring



ISO 14001 Environmental Management system



Green flag award



90% of waste recycled



On track to achieve net zero carbon by 2050



2\* Fitwel accreditation for Health & Wellbeing





# Your Community

Chineham Park is one of the region's most desirable business addresses. A delightful 90 acre parkland setting that's a breath of fresh air for the people who work there. Customer convenience and wellbeing is at the heart of the comprehensive amenity offer and events schedule. The park is equally accessible by car or bike, with superb public transport links too, including an exclusive free bus service connecting people directly to the nearby Basingstoke train station.





# Get in touch

If you're interested in joining a business community in high quality office space, amongst an abundance of amenities and events, please contact one of the team today:

## CBRE

Jeremy Rodale  
+44 (0)7766 780 590  
jeremy.rodale@cbre.com

Dom Clarke  
+44 (0)7766 721 036  
dom.clarke@cbre.com

James Bronger  
+44 (0) 7860 618 231  
james.bronger@cbre.com

## HOLLIS HOCKLEY

Jeremy Metcalfe  
+44 (0)7587 039 562  
jeremy.metcalfe@hollishockley.co.uk

Elizabeth Gray  
+44 (0)7712 815 268  
elizabeth.gray@hollishockley.co.uk



**ChinehamPark**

Frasers Property's commitment is to deliver enriching and memorable experiences for our customers and stakeholders across the integrated portfolio and services we provide. We have businesses in Singapore, Australia, Europe, China and Southeast Asia, and a hospitality footprint spanning over 80 cities.

### Contact:

Chris Stevens  
chris.stevens@frasersproperty.com

Kipp Harden  
kipp.harden@frasersproperty.com

[chinehampark.co.uk](http://chinehampark.co.uk)

Misrepresentation Act 1967: At the time of printing the contents of this brochure were believed to be correct but cannot be guaranteed and are expressly excluded from any contract. April 2024.

