



CHINEHAM PARK

chinehampark.co.uk

8

8 ELMWOOD

OFFICES TO LET

2,345 – 2,457 SQ FT



NO.8 ELMWOOD

For smarter business

No. 8 Elmwood provides flexible, high quality space to suit your business needs.

The offices, which are currently undergoing refurbishment, are located on Chineham Park, Basingstoke's premier business park and a vibrant business community.

The space will be available from September 2019.



NO.8 ELMWOOD

For smarter space

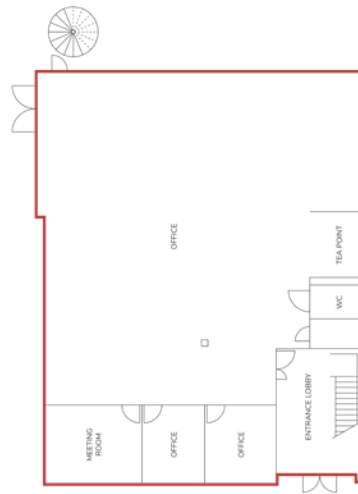
No. 8 Elmwood provides a range of flexible office accommodation with excellent parking provision, to suit your growing business.

SCHEDULE OF AREAS

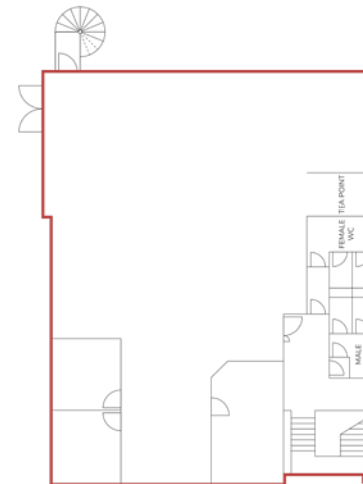
Net Internal Area	SQ FT	SQ M	PARKING
Ground Floor	2,457	228	14 spaces
First Floor	2,345	218	13 spaces
Total Available	4,802	446	27 spaces



FLOORPLANS



GROUND FLOOR



FIRST FLOOR

SPECIFICATION:

- New energy efficient LED lighting
- Comfort cooling
- Excellent car parking provision
- Fitted kitchens and meeting rooms

CHINEHAM PARK

For smarter balance

We create a vibrant community through continuous customer engagement and diverse amenity offer. Drawing upon the natural setting to enable a relaxing and enjoyable environment, Chineham Park provides fantastic places to relax and refresh.



We've created open spaces to give your wellbeing a boost

The park organises a range of events and weekly classes throughout the year that helps create a friendly community.

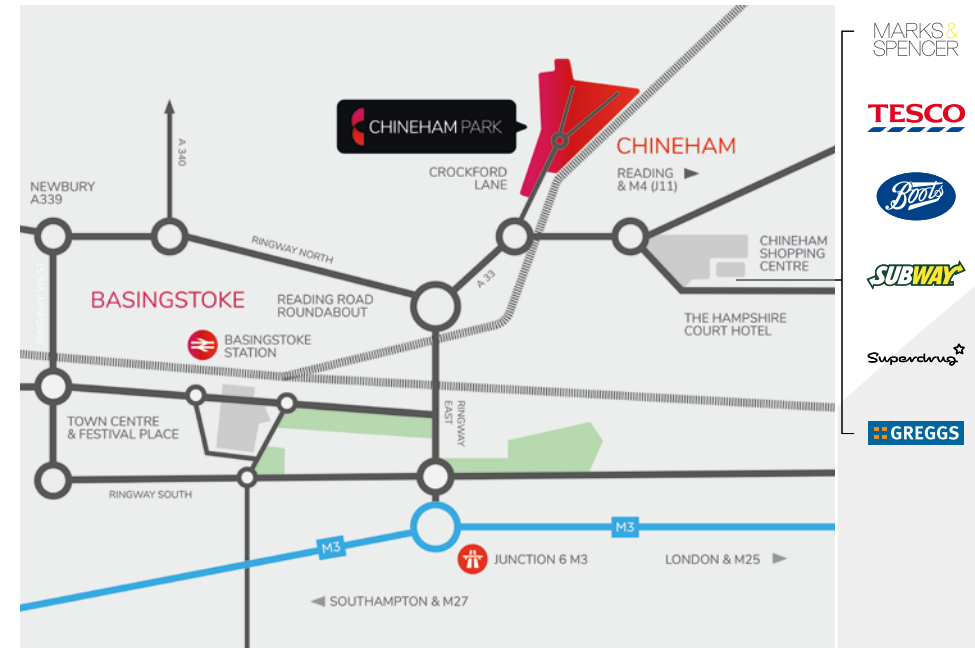
Some of our on site amenities include: a Fitness First Gym, Restaurant, Children's nursery, a Hair & Beauty studio as well as running routes.



CHINEHAM PARK

For smarter positioning

Located just minutes from Basingstoke, Chineham Park is easily accessible for commuters with a range of public transport options close by.



CHINEHAM PARK

For smarter choices

At Chineham Park, your company will benefit from a secure, well maintained business environment, offering a flexible leasing approach to meet your current and future needs.

For further information:

Edward Smith  BNP PARIBAS

Edward.smith@realestate.bnpparibas
+44 (0) 20 7318 5136

Alice Hilliard  BNP PARIBAS

Alice.hilliard@realestate.bnpparibas
+44 (0) 20 7484 8136

Andrew Newman  HOLLIS HOCKLEY

Ajn@hollishockley.co.uk
+44 (0) 1256 489800

Jeremy Metcalfe  HOLLIS HOCKLEY

Jeremy.metcalfe@hollishockley.co.uk
+44 (0) 1256 489800

Management Office

200 Cedarwood
Chineham Park
Basingstoke
RG24 8WD

+44 (0) 1256 486680

www.chinehampark.com



Frasers Property's commitment is to deliver enriching and memorable experiences for our customers and stakeholders across the integrated portfolio and services we provide.

We have businesses in Singapore, Australia, Europe, China and Southeast Asia, and a hospitality footprint spanning over 80 cities.



FRASERS
PROPERTY



CHINEHAM PARK

Misrepresentation Act 1967: At the time of printing the contents of this brochure were believed to be correct but cannot be guaranteed and are expressly excluded from any contract. November 2019.